

## Histology Lab - part II

Name: \_\_\_\_\_

Period: \_\_\_\_\_

Date: \_\_\_\_\_

1.) List the three different types of muscles below:

-  
-  
-

2.) IS skeletal muscle voluntary? \_\_\_\_\_

3.) What does it mean to be a voluntary muscle (in other words, what other system is the skeletal muscle working with)?

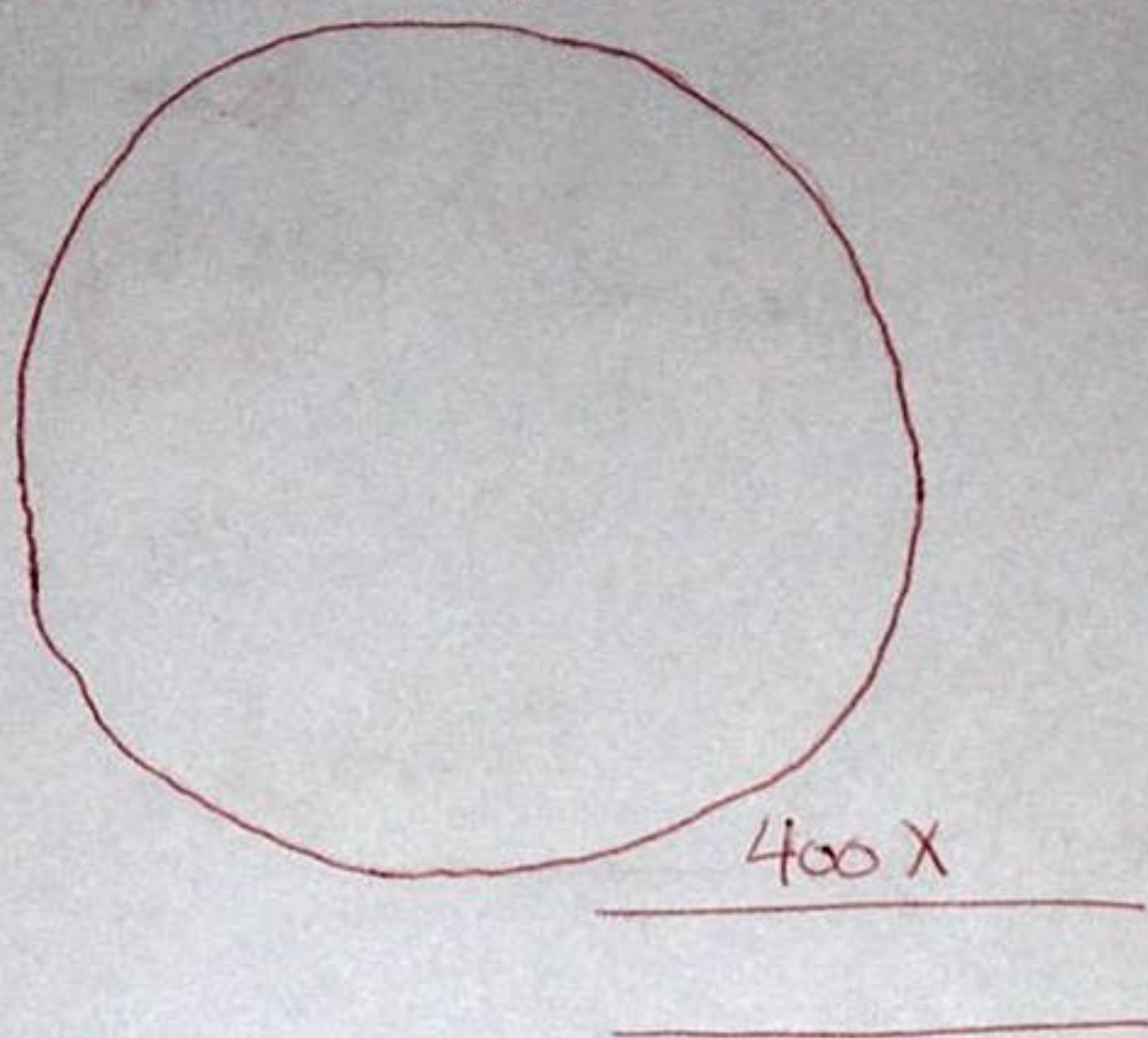
4.) IS smooth muscle voluntary? \_\_\_\_\_ How about cardiac muscle? \_\_\_\_\_ Explain your answers.

5.) List two characteristics that make cardiac muscle unique from the other two muscle types.

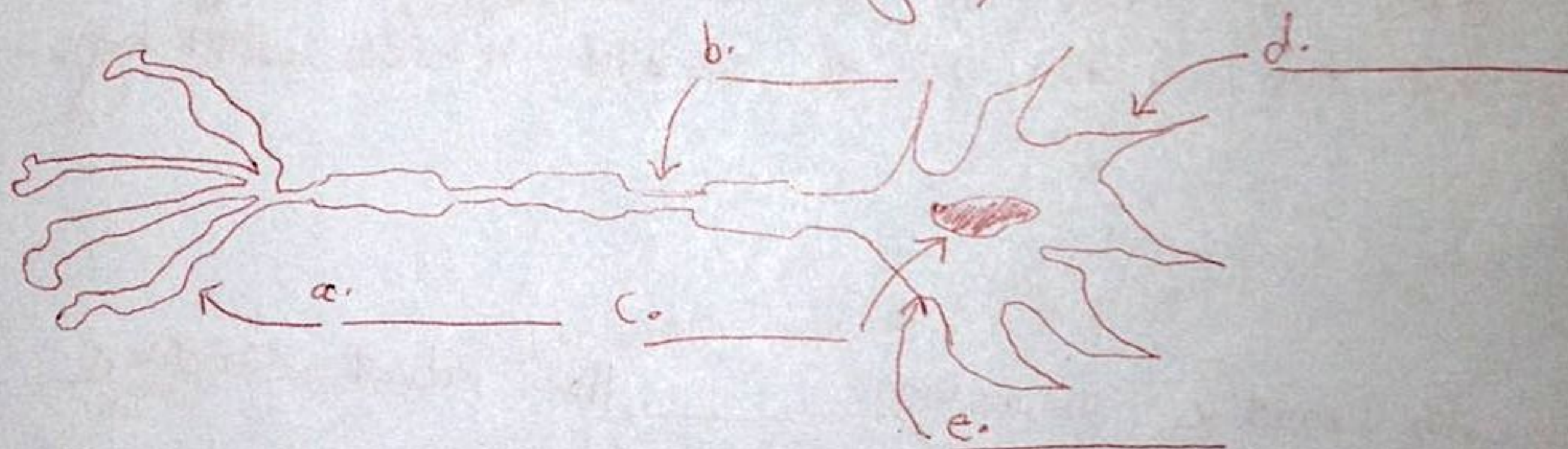
-  
-

6.) Draw a smooth muscle as it appears in your book.

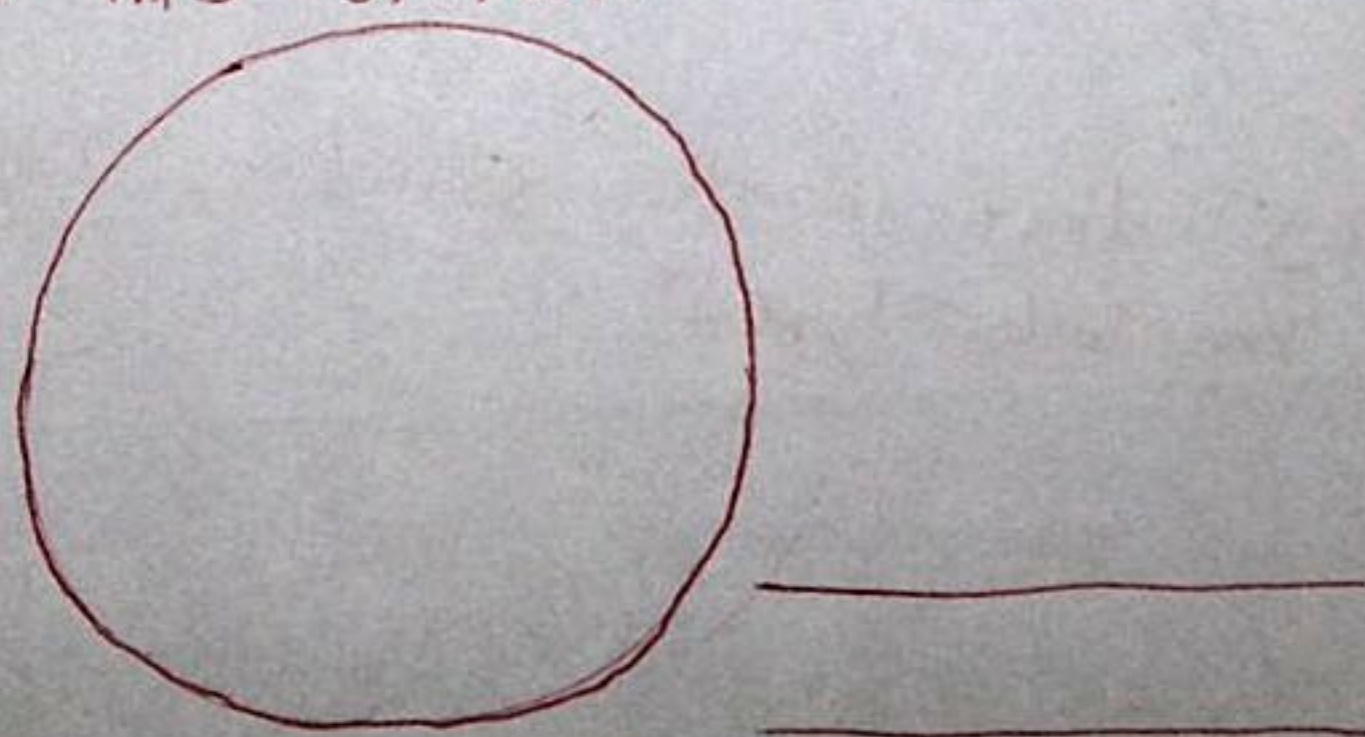
7. Choose one of the muscle types as it appears on the slide. Draw label the nucleus and cell membrane under 400X.



8. Label the neuron below using your books;



9. Draw and label the structures above on the neuron that you see at this station.



10. What are the black dots found all around the neuron? \_\_\_\_\_  
What do these do for the neuron?